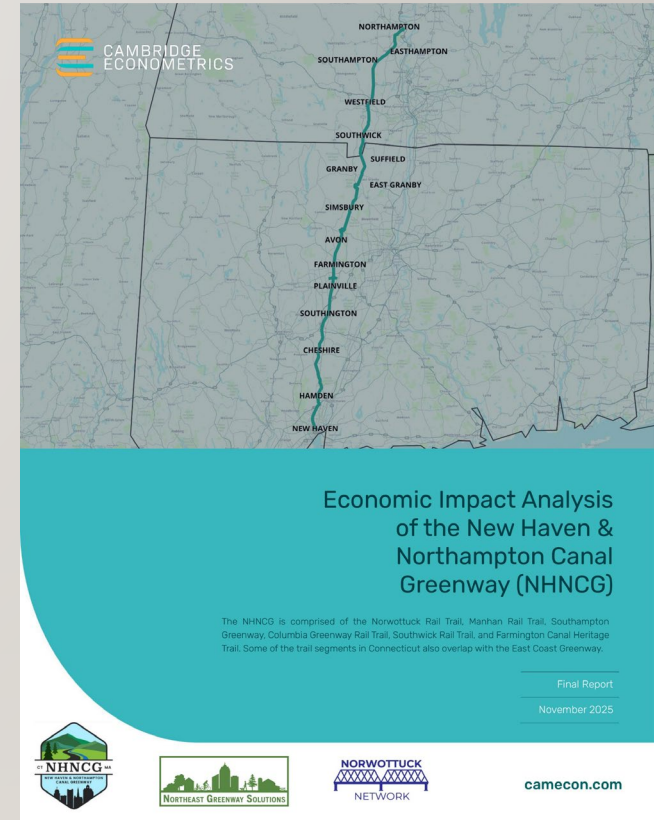
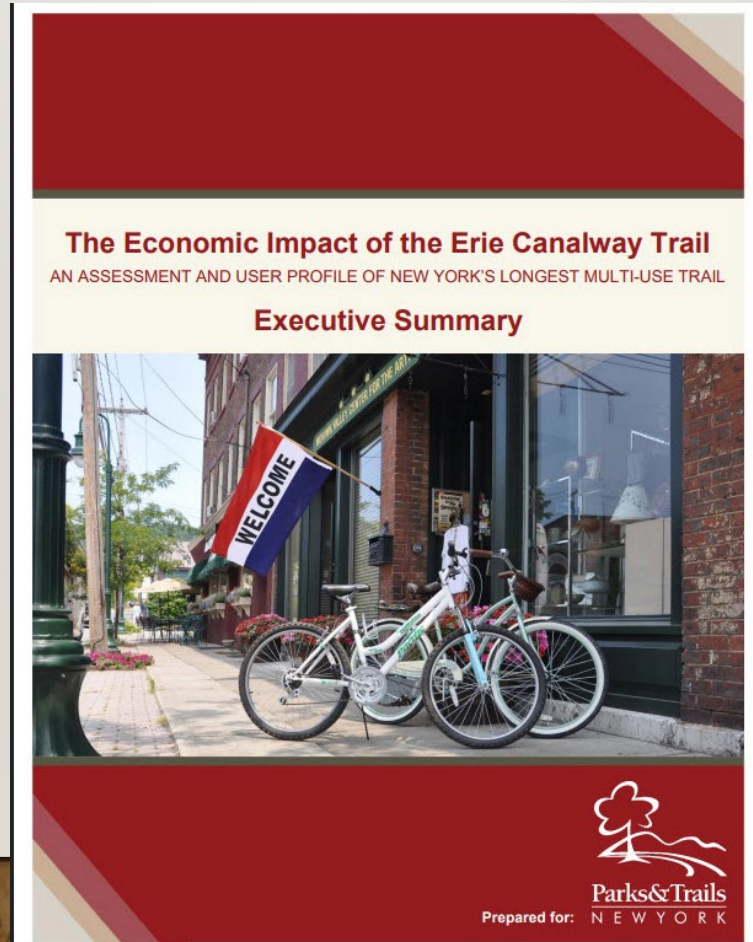


# A CONCISE SUMMARY OF THE THREE MOST-RESPECTED REPORTS ON THE ECONOMIC IMPACTS OF A LONG-DISTANCE LINEAR PARK TYPE PROJECT



# THE THREE MOST RESPECTED REPORTS ON THE ECONOMIC IMPACTS OF A LONG- DISTANCE LINEAR-PARK TYPE PROJECT

**Economic Impact of the Erie Canal**

<https://tinyurl.com/PTNYReport>

**Envisioning a Statewide Connection: Mass Central Rail Trail Benefits Study.**

<https://tinyurl.com/MCRT-Report>

**Economic Impact Analysis of the New Haven & Northampton Canal Greenway.**

<https://www.greenwaysolutions.org/n-s-report>



- In 2017 when the Governor of NY was notified of the impact of the Erie Canal Trail when it was only 78% complete, he was stunned.
- **\$253+ million a year in economic impacts. Or \$3/4 million a mile.**
- He then arranged for the creation of the Empire State Trail which finished this and built another 400 miles of linear parks that runs from NYC to Canada.

## Economic Impact of the Erie Canal Report

<https://tinyurl.com/PTNYReport>



## THE THREE MOST RESPECTED REPORTS ON THE ECONOMIC IMPACTS OF A LONG-DISTANCE LINEAR PARK-TYPE PROJECT

**The Economic Impact of the Erie Canalway Trail**  
AN ASSESSMENT AND USER PROFILE OF NEW YORK'S LONGEST MULTI-USE TRAIL

**Executive Summary**

Prepared for: **Parks & Trails NEW YORK**



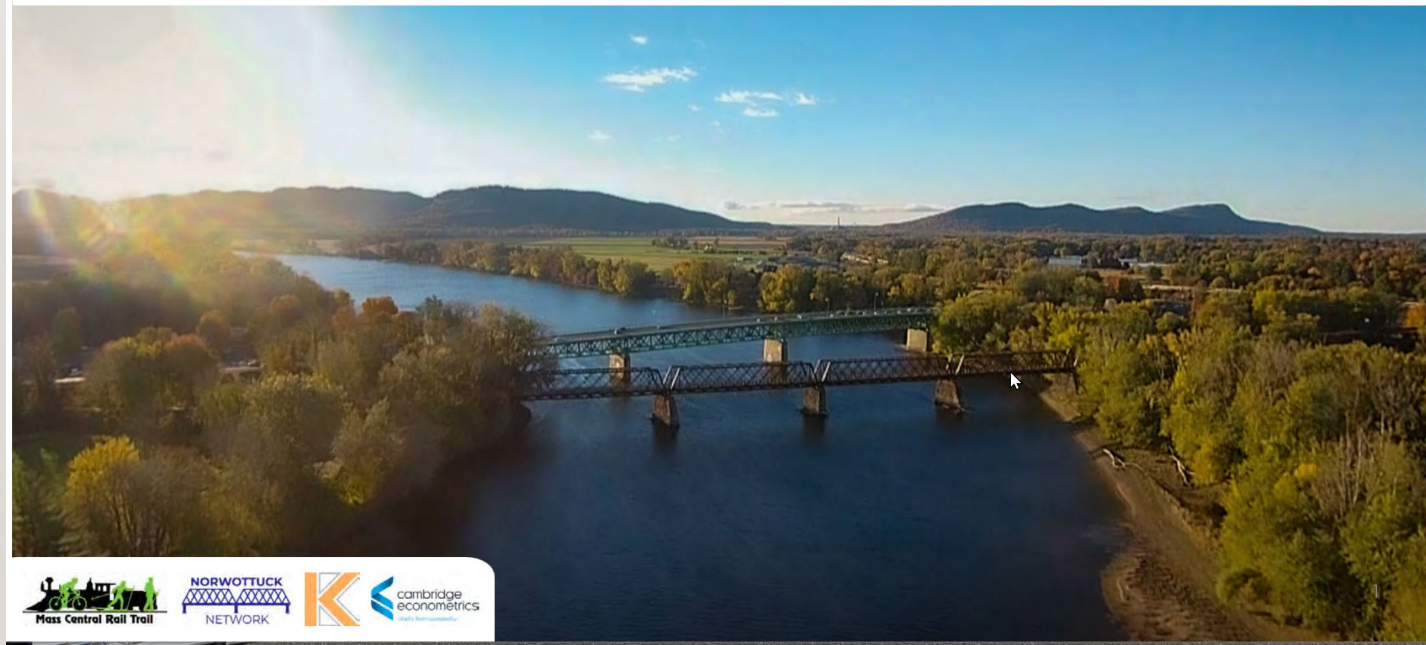
## Summer of 2023. Report about what the Mass Central Rail Trail would be worth when completed

- Between 4-5 million users a year.
- 960,000 visitors just in Worcester County
- 400,000--500,000 overnight visitors a year
- **\$213+ million a year in economic impacts. Or \$2 million a mile.**
- State government continues to move this forward, but is just now beginning to align funds and capacity to finish the rail trail.
- [www.MCRT.org](http://www.MCRT.org) is the main site.

<https://tinyurl.com/MCRT-Report>

## THE THREE MOST RESPECTED REPORTS ON THE ECONOMIC IMPACTS OF A LONG-DISTANCE LINEAR PARK-TYPE PROJECT

### *Envisioning a Statewide Connection* Mass Central Rail Trail Benefits Study



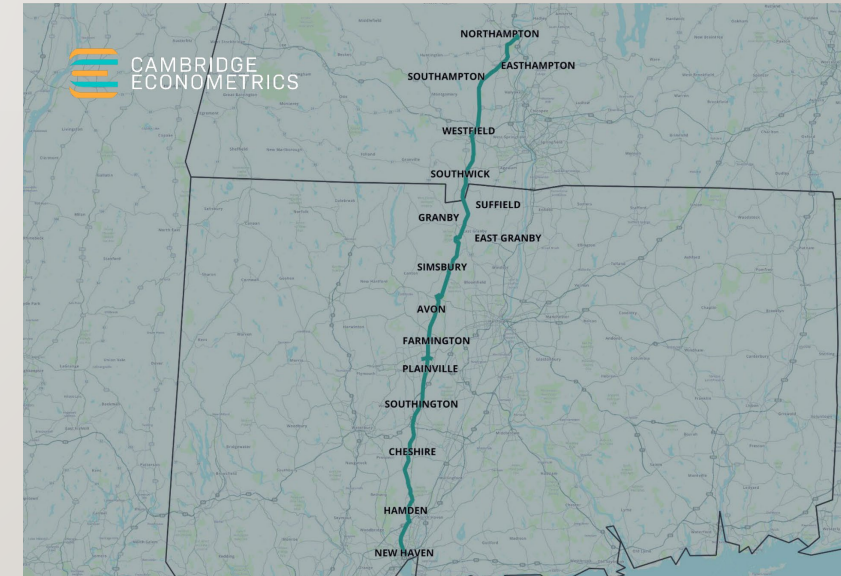
**Fall of 2025. Report about what the New Haven & Northampton Canal Greenway would be worth when completed.**

- 1.6 million users a year.
- Around 160,000 overnight visitors a year
- **\$114 million a year in economic impacts Or \$1.4 million a mile.**
- [www.NHNCG.org](http://www.NHNCG.org) A site about the entire trail
- This is a trail that used to have 12+ names tied to different communities and locales and it is now starting to distill into one name.

## Economic Impact Analysis of the New Haven & Northampton Canal Greenway.

<https://www.greenwaysolutions.org/n-s-report>

## THE THREE MOST RESPECTED REPORTS ON THE ECONOMIC IMPACTS OF A LONG-DISTANCE LINEAR PARK-TYPE PROJECT



### Economic Impact Analysis of the New Haven & Northampton Canal Greenway (NHNCG)

The NHNCG is comprised of the Norwottuck Rail Trail, Manhan Rail Trail, Southampton Greenway, Columbia Greenway Rail Trail, Southwick Rail Trail, and Farmington Canal Heritage Trail. Some of the trail segments in Connecticut also overlap with the East Coast Greenway.

Final Report

November 2025



camecon.com